



Commercial Outdoor Full Color LED Display Led Module P10 Outdoor Fast Installation

Our Product Introduction

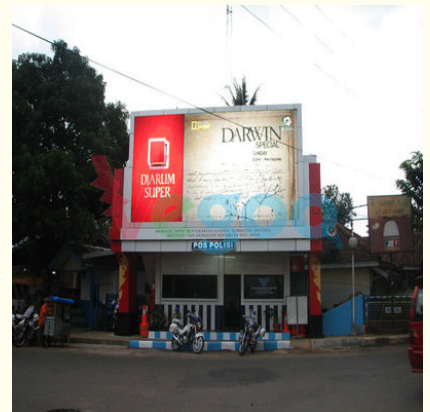
Basic Information

- Place of Origin: China
- Brand Name: Vegoo
- Certification: CE/ROHS/FCC/
- Model Number: VG-FD P10
- Packaging Details: Plywood case / Flight case / Carton box
- Delivery Time: 3-5 days
- Supply Ability: 3000Sq.m



Product Specification

- Product Name: P10 Outdoor Full Color LED Display
- Pixel Pitch: 10mm
- Pixel Configuration: 1R1G1B/SMD3535
- Density: 10,000 Pixel/m²
- Cabinet Size(L×W×H)mm: 960mm×960mm×130mm
- Module Resolution: 32×16
- Cabinet Resolution: 96×96
- Driving Method: 1/ 2 Scan
- Brightness: 7500CD /
- Contrast: 1000:1
- Highlight: outdoor advertising led display screen,
outdoor full color led screen



for more products please visit us on hdled-display.com

Product Description

P10 Outdoor Full color LED Display fast installation 320mm×160mm

Description:

1. Hanging beam structural design makes it easy and fast for installation
2. Neat and Hidden Wiring allow the LED display more tidy and beautiful.
3. Hanging beam and the base come to unity, That is, hanging beam could be used as a base when we need to install display on the floor. Even no back frame, the base can support the whole display if only the display's weight is 4m more or less. Efficiently utilize resources, reduce costs, convenient for installation .
4. locks on both sides of cabinet contribute to uniformity and flatness of two neighboring cabinets.
5. fast installation, a cabinet could be uninstalled in one minute.

P10 Outdoor Full color LED Display Specification

| NO: | Product Name | Specification |
|-----|--------------------------------|--|
| 1 | Pixel Pitch | 10mm |
| 2 | Pixel Configuration | 1R1G1B/SMD3535 |
| 3 | Density | 10,000 pixel/m2 |
| 4 | Module Size(L×W)mm | 320mm×160mm |
| 5 | Cabinet Size(L×W×H)mm | 960mm×960mm×130mm |
| 6 | Module Resolution | 32×16 |
| 7 | Cabinet Resolution | 96×96 |
| 8 | Driving Method | 1/ 2 Scan |
| 9 | Driving IC | MBI5124 or ICN 2038S |
| 10 | Brightness | 7500CD / |
| 11 | Contrast | 1000:1 |
| 12 | Brightness Adjustment | Auto and Manual |
| 13 | Power Consumption | Max Power: 700W |
| 14 | | Average power: 300W |
| 15 | Module Weight | 0.28kg |
| 16 | Color Temperature | 9500K—11500K |
| 17 | Horizontal Viewing Angle | 140° |
| 18 | Vertical Viewing Angle | 140° |
| 19 | Signal Processing | 10 or 14bit |
| 20 | Grey Processing | 1024×1024×1024 16834×16834×16834 |
| 21 | Control Distance | cable100m,Multimode500m,Single mode 2km |
| 22 | Frame Frequency | 65 Hz |
| 23 | Refresh Rate | >1920Hz |
| 24 | Control Mode | Synchronous/Asynchronous |
| 25 | The Opposite Calibration Curve | With Eight Optional Gamma Calibration Curve |
| 26 | | Users can choose the recommended curve or adjust it based on actual situation |
| 27 | MTBF | >50000 hours |
| 28 | Life Span | 100,000 Hours |
| 29 | Operating Temperature | Working : -20 - 65 °C |
| 30 | | Storage : -40 - 85 °C |
| 31 | Environment Temperature | -30°C to 60°C; humidity Rh10% to 95% |
| 32 | Remote Control | Can realize remote control and send alarm signal to operators in case of logging failure (Be customized) |
| 33 | Self-checking Technique | Self-inspection, communication test, power test, temperature monitoring (Be customized) |
| 34 | Operating System Platform | WindowsNT,Windows2000,WindowsXP,Windows7 |
| 35 | Power Supply | AC 85-264V |

| | | |
|----|------------|---|
| 36 | Protection | waterproof, dustproof, high temperature pervention, anticorrosion, smoulderproof, anti-static, shockproof, lightningproof, smoke alarm and temperature alarm. (Be customized) |
|----|------------|---|

Our service

1. Your inquiry related to our products or price will be replied in 2hrs
2. OEM customized products
3. 2 years warranty
4. Complaint respond period not exceed 24 hours; maintenance guidance and problem solution supplied in 48 hours.
5. Free technician training..
6. Top quality+Reasonable price+Responsible After Service=Successful & Win

Products exchanged or returned :

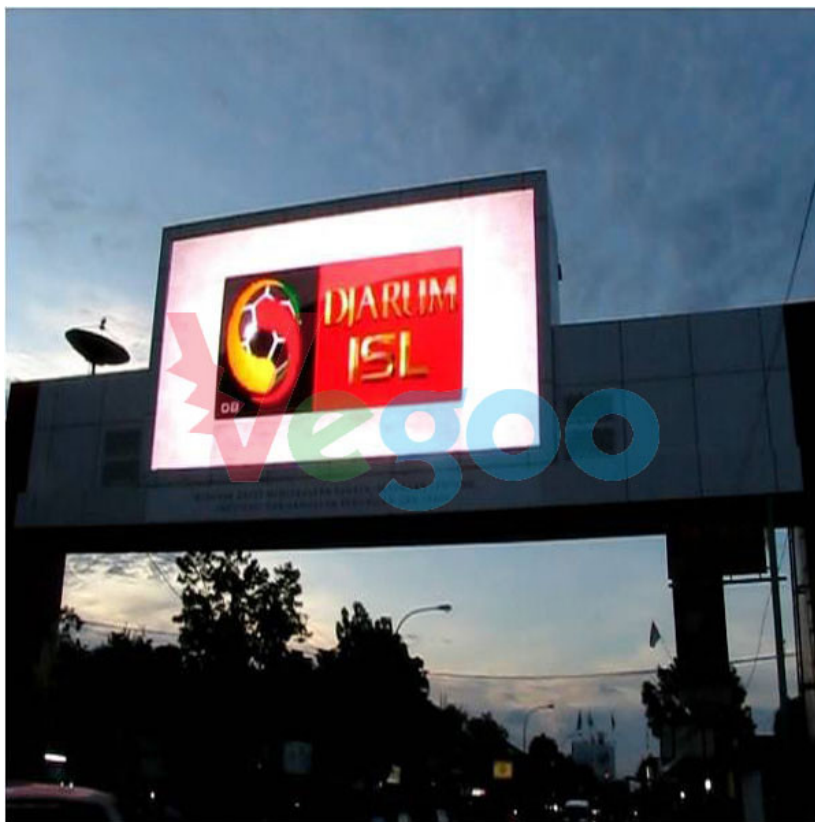
we supply our products strictly according to the contract list , if the quantity or specification doesn't meet our contract list, the buyer can give objections within 3 days after received the products , we'll exchanged after company confirmed.

Casual damage situation:

We can provide corresponding fittings without extra fee when improper operation or unexpected artificial damaged arise .

Over Guarantee time :

You only have to pay maintenance cost such as labor costs , spare parts costs and round-trip costs !



Shenzhen Weigu Electronic Technology Co., Ltd.



86-15118043086



Linda@vegooled.com



hdled-display.com

806 Building 1 Geya Technology Building, Clock Base, Ma Tou community, Ma Tian Street, Guangming District ,
Shenzhen, China