

## Home Indoor Advertising LED Display Screen , Custom Made Fine Pitch LED Display

Our Product Introduction

### Basic Information

- Place of Origin: China
- Brand Name: Vegoo
- Certification: CE/ROHS/FCC/
- Model Number: VG-FD 3
- Minimum Order Quantity: negotiation
- Price: negotiation
- Packaging Details: Plywood case / Flight case / Carton box
- Delivery Time: 15 working days
- Payment Terms: L/C, T/T
- Supply Ability: 3000 Sq.m / month



### Product Specification

- Product Name: Indoor Advertising LED Display Screen
- Feature: Fine Pitch LED Display
- Application: Home
- Pixel Configuration: 1R1G1B/SMD3528 White Lamp
- Density: 17,777 Pixel/m<sup>2</sup>
- Moduel Size(L×W)mm: 244mm×244mm
- Brightness: 1200cd/
- Contrast: 1000:1
- Highlight: **indoor advertising led display ,  
indoor full color led display screen**

for more products please visit us on [hdled-display.com](http://hdled-display.com)

## Product Description

### Home Indoor Advertising LED Display Screen , Custom Made Fine Pitch LED Display

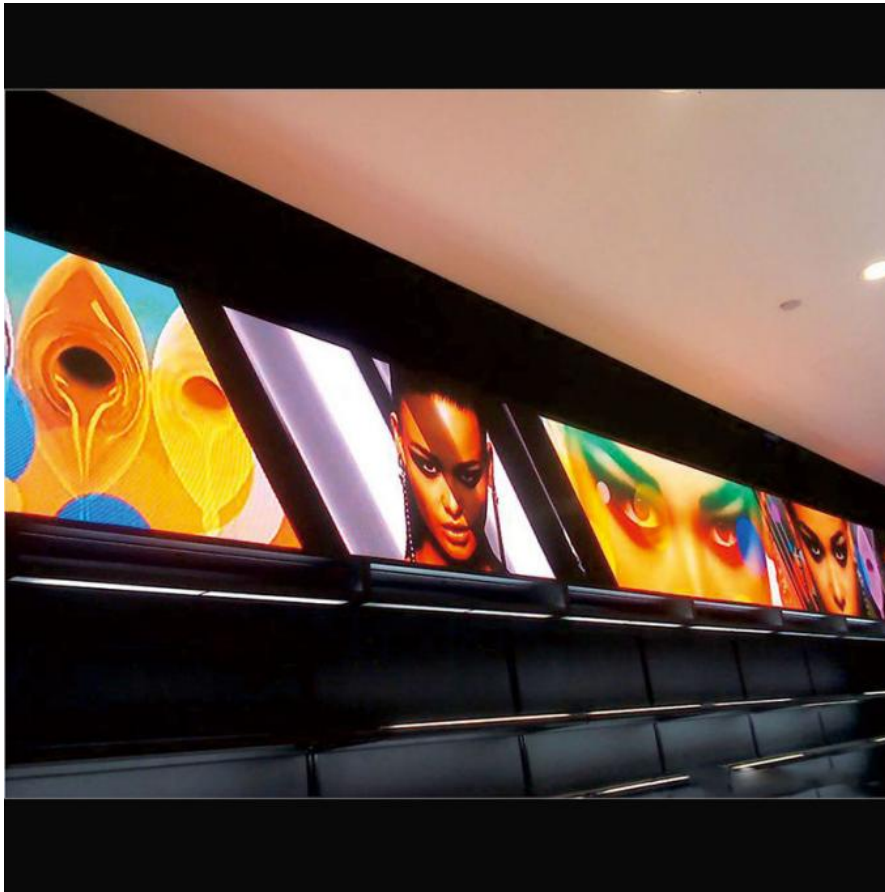
#### Indoor Advertising LED Display Screen Description:

- Our LED display signs have the ISO9001:2000 Quality System Certification;
- CE Certification of our led display signs;
- Rohs Certificates;
- Excellent, Technical Innovation;
- Price performance ratio;
- Contract Performance and Credibility;
- LED Displays with high brightness LED's;
- Modular LED display screens;
- Our LED Display Screens have two years warranty ;
- Post sale assistance (after sale);
- High expertise and know-how about LED display products;

#### Indoor Advertising LED Display Screen Specification:

NO:	Product Name	Specification
1	Pixel Pitch	7.62mm
2	Pixel Configuration	1R1G1B/SMD3528 White lamp
3	Density	17,777 pixel/m2
4	Module Size(L×W)mm	244mm×244mm
5	Cabinet Size(L×W×H)mm	732mm×732mm×90mm
6	Module Resolution	32×32
7	Cabinet Resolution	96×96
8	Driving Method	1/8 Scan
9	Driving IC	MBI5124
10	Brightness	1200cd/
11	Contrast	1000:1
12	Brightness Adjustment	Auto and Manual
13	Power Consumption	Max Power: 650W
14		Average power: 300W
15	Module Weight	0.45kg
16	Color Temperature	9500K—11500K
17	Horizontal Viewing Angle	140°
18	Vertical Viewing Angle	140°
19	Signal Processing	10 or 14bit
20	Grey Processing	1024×1024×1024 16834×16834×16834
21	Control Distance	cable100m,Multimode500m,Single mode 2km
22	Frame Frequency	65 Hz
23	Refresh Rate	>1920Hz
24	Control Mode	Synchronous/Asynchronous
25	The Opposite Calibration Curve	With Eight Optional Gamma Calibration Curve
26		Users can choose the recommended curve or adjust it based on actual situation
27	MTBF	>50000 hours
28	Life Span	100,000 Hours
29	Operating Temperature	Working : -20 - 65 °C
30		Storage : -40 - 85 °C
31	Environment Temperature	-30°C to 60°C; humidity Rh10% to 95%
32	Remote Control	Can realize remote control and send alarm signal to operators in case of logging failure (Be customized)
33	Self-checking Technique	Self-inspection, communication test, power test, temperature monitoring (Be customized)
34	Operating System Platform	WindowsNT,Windows2000,WindowsXP,Windows7
35	Power Supply	AC 110-220V
36	Protection	dustproof, high temperature pervention, anticorrosion, smoulderproof, anti-static, shockproof, lightningproof, smoke alarm and temperature alarm. (Be customized)

## Indoor Advertising LED Display Screen Details



### Competitive Advantage:

#### 1. Wide application field & short ROI time:

commercial advertising LED display screen, Stadium perimeter LED display screen, Mobile trailer LED display screen for mobile media, shopping mall LED display screen for logo showing, bank&stock exchange LED display screen for rates showing, train & bus station LED display screen, air port LED display screen, telecommunication LED display screen system for information showing and instruction

#### 2. High Contrast ratio: 4000:1

Which is a very high level to ensure a vivid image of our LED display screen system.

#### 3. Clear vivid image quality:

Even in direct, full-on sunlight to ensure you attract more audience to get short ROI of your LED display screen's investment.

#### 4. Long-term Brightness:

7000-nit brightness (for outdoor full color)(2000 nits brightness for indoor full color ) capacity throughout product lifetime of the LED display screen.

#### 5. Easy Installation & Using:

easy & simple installation interface and user friendly software to ensure the user friendly interface of the LED display screen system

#### 6. Convenient Servicing:

Front and rear cabinet access makes the maintenance work very convenient and low cost to help you concentrate more time and energy on your main marketing promotion business.



**Shenzhen Weigu Electronic Technology Co., Ltd.**

☎ 86-15118043086

✉ [Linda@vegooled.com](mailto:Linda@vegooled.com)

🌐 [hdled-display.com](http://hdled-display.com)

806 Building 1 Geya Technology Building, Clock Base, Ma Tou community, Ma Tian Street, Guangming District, Shenzhen, China

