

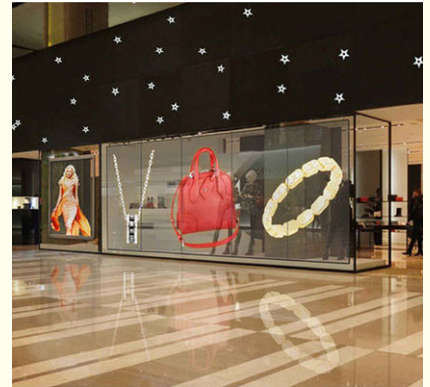
P3.91-7.8 Transparent Led Wall Window Showcase Slim Light Cabinet Unit Size 1000*500mm Weigh 10kg Sqm

Our Product Introduction

for more products please visit us on hdled-display.com

Basic Information

- Place of Origin: made in China
- Brand Name: vegoo
- Certification: CE/ROHS/FCC/CCC
- Model Number: Transparent P3.9-7.8-1
- Minimum Order Quantity: Negotiable
- Price: Negotiable
- Packaging Details: flight case, plywood case, cartons
- Delivery Time: 10-25 days
- Payment Terms: T/T, L/C, Western Union, D/P
- Supply Ability: 5000sq.m/month

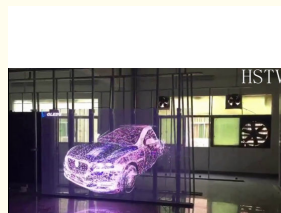
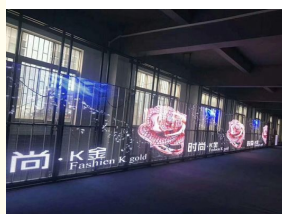
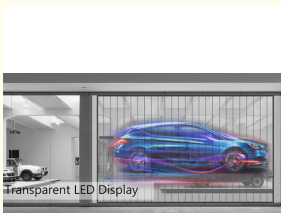


Product Specification

- Product: Transparent LED Display
- Tube Chip Color: SMD Full Color
- Usage: Outdoor And Indoor
- Pixel Pitch: P3.9-7.8mm
- Brightness: 3500-5500cd
- Cabinet Size: 1000x500mm
- Module Size: 500x250mm
- Application: Doors And Windows
- Application1: Showcase
- Advantage: High Transmittance
- Advantage2: Slim And Light
- Function: Easy Control Easy Work
- Transmittance: 75%
- GW/SQM: 10kg/SQM
- Highlight: transparent led panel,



More Images



Product Description

Transparent LED showcase P3.91-7.8 China factory slim-light flexible installation cabinet 500*1000mm

Application:

Retails
Shopping malls
Night view & lightings
Stage events
Curtain wall series

Technical specifications:

P3.9 -7.8MM cabinet parameter	
MODULE MODEL	GLS.GTR.039.1921
MODULE SIZE(mm)	500*250mm
RESOLUTION	128*32
INPUT VOLTAGE	DC5V
TRANSPARENCY RATE	55%
MODULE POWER	25W
CABINET SIZE(mm)	1000*500*65mm
MAX COMSUMPTION	400W/
Cabinet resolution	W256*H64
Input voltage	AC220V/(110V)±15%,47 63Hz
Cabinet material	aluminum, PC, stamping parts
cabinet weight	6KG
protection grade	IP42
pixel pitch	H:3.9mm V:7.8mm
LED SPECICATION	OUTDOOR SMD1921
PIXEL DENSITY	32768
SCAN MODE	1/16
REFRESH RATE	2880HZ
brightness(CD/m ²)	3500-4500
Working humidity	10% 95%RH
working temperature	-20~50C°
working life	≥30000H
signal transfer	Internet cable
control system	

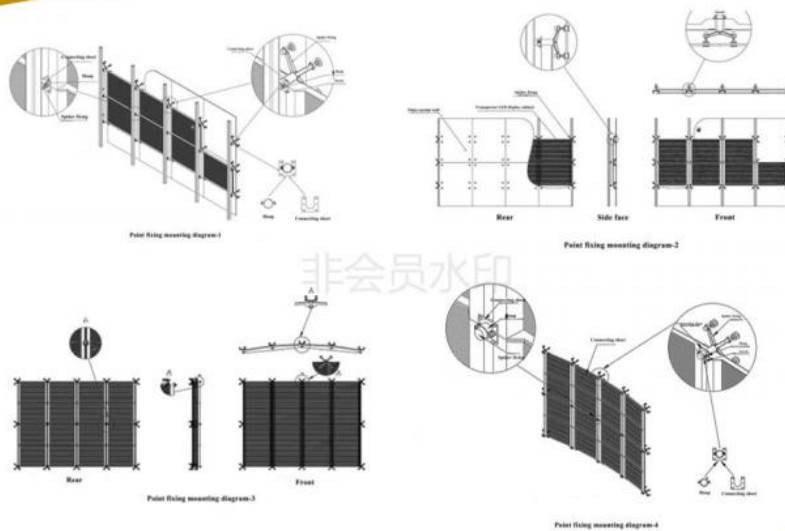
about us

Audio visual factory with 12 years experience of manufacturing and exporting all over the world.
Skilled at rental LED display seamless installation and mainly expanded small pixel pitch indoor LED displays.

- HOTEL LOBBY ● EXHIBITION CENTER
- SHOPPING MALL ● RESTAURANT
- CINEMA ● FUNCTIONAL ADVERTISING
- STORE OUTLET ● PROMOTION ACTIVITY
- EVENTS ● REAL ESTATE BUSINESS

Transparent screen technical parameters

Item	Unit	Parameters			
Type	/	P3.9/7.8	P5.2/10.4	P7.9/7.8	P10.4
Pixel configuration	/	SMD1921	SMD1921	SMD1921	SMD1921
Resolution	dot/m ²	32256	18433	16128	9216
Pixel pitch	mm	X=3.9 Y=7.8	X=5.2 Y=10.4	X=7.8 Y=7.8	10.416
moduel size	mm	500(W)*125(H)			
cabinet szie	mm	1000(W)*500(H)or1000(W)*1000(H)			
Gray	bit	16			
Brightness	cd/m ²	3500/1200	3000/1200	2500/1000	2500/1000
Max power consumption	W/m ²	680	660	650	520
Avg. power consumption	W/m ²	235	235	225	169
Weight	kg/m ²	13	10.5	12	10
Refrash rate	Hz	1920	1920	1920	1920
Transparency	/	66%	74%	66%	74%



For better quotations, include:

- A self introduction
- Special requests, if any

Contact:

seven@vegooled.com;



Shenzhen Weigu Electronic Technology Co., Ltd.



86-15118043086



Linda@vegooled.com



hdled-display.com

806 Building 1 Geya Technology Building, Clock Base, Ma Tou community, Ma Tian Street, Guangming District ,
Shenzhen, China