

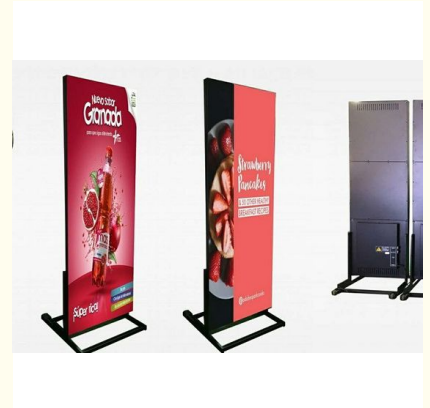
## Digital Poster LED Display P2.5 Display Size 1920mm X 640mm Random Combination

Our Product Introduction

for more products please visit us on [hdled-display.com](http://hdled-display.com)

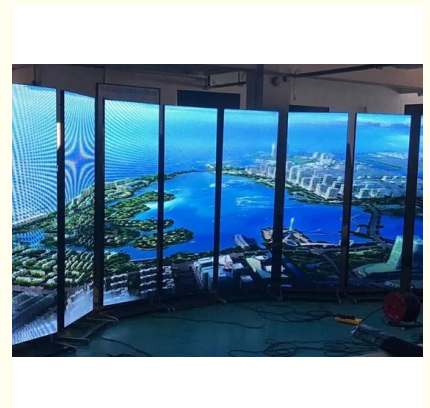
### Basic Information

- Place of Origin: China
- Brand Name: Vegoo
- Certification: CE,FCC,ROHS
- Model Number: VG-P2.5PS
- Minimum Order Quantity: Negotiable
- Price: Negotiable
- Packaging Details: 2000 X 100 X 850mm
- Delivery Time: 7-15 working day
- Payment Terms: T/T
- Supply Ability: 1000 sets per month

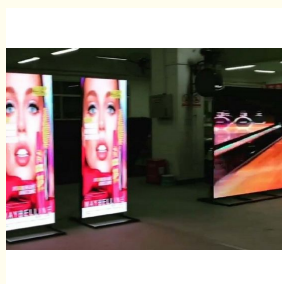


### Product Specification

- Shape: Rectangle
- Color: Black
- Light Source: SMD LED Strips
- Size: Customized
- Type: Standing
- Thickness: 45mm
- Usage: Exhibition,LED Photo Frame Etc
- Product Name: Standing Light Box Double
- Life Span: 100000hrs
- Keywords: Poster Display Stand
- Highlight: digital advertising display screens, floor standing digital signage



### More Images



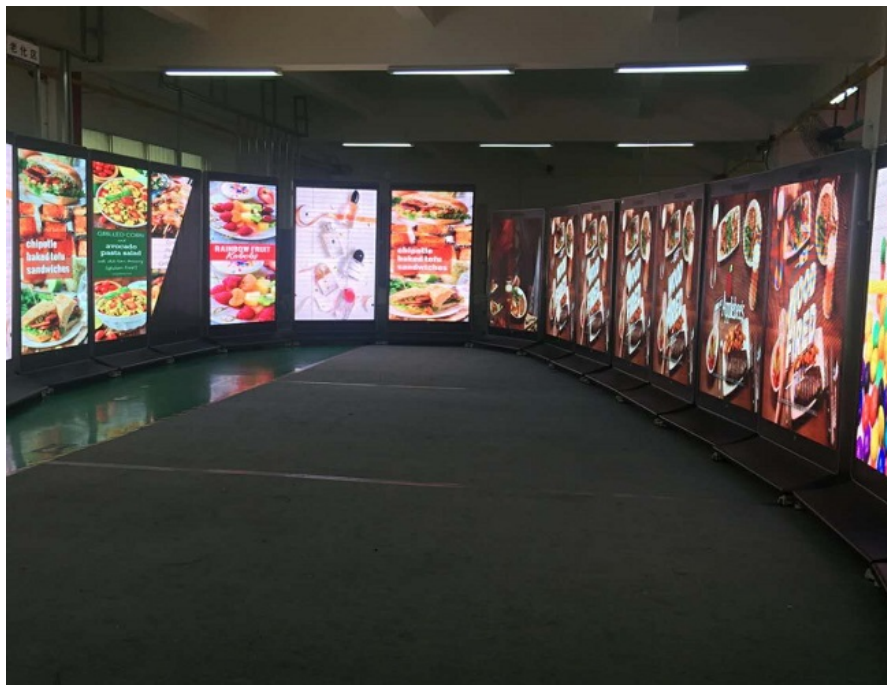
## Product Description

### Digital poster led display p2.5 display size 1920mm x 640mm Random combination

#### Description:

Red, Green and Blue light emitting diode (LED) lamps should be the same grade, height and wavelength on the same display. The height or Red, Green and Blue light from light emitting diode (LED) lamps at the proportion of R:G:B=3:6:1. The chips were imported from Optotech Cree/ Nichia are adopted; Adopted automation solid crystal, light split, bonding wire, bagging;

### Indoor Full Color P2.5 Led Display screen



#### Reliability Test

In order to avoid the potential defects caused in the design and production, we conduct a series of reliability test such as the electronic performance test for the semi-finished products, the anti dust test, the waterproof test, the anticorrosion test (salty spraying test), the vibration test and thermal shock tester etc. The reliability test for the semi-finished products: Before gluing semi-finished modules, more than 48 hours aging should be made in the high temperature for all the modules. After QC inspection ok then can package it. The reliability test for the finished products: After assembling finished modules to the led cabinets and simulating the assembly for the whole cabinets, we keep them aging for more than 72 hours, if no defects found, then we will delivery goods to our customers. The waterproof test: During the rainy seasons, the waterproof performance for the outdoor led display is quite important. The performs high-pressure water spraying as well as against the front cabinet to ensure, if waterproof test in good conditions, therefore, protection rate can reach IP65. The anti corrosion test: In order to ensure the reliability of anti corrosion of the PCB and cabinet, hence the salty spraying test must be made during the productions. Vibration test: For different kind of screens, in order to ensure the reliability of transportation and moving, therefore, the simulated vibration test must be conducted. The environment test: The real outdoor environment can ensure the effects of display in factory are the same as the spot effects.

#### Specifications:

Model Type	Vg-p2.5pp	vg-p2.5pl
Pixel pitch	3 mm	3mm
LED Type	SMD 2121 Mat Black	SMD 2121 Mat Black
Pixel type(R / G / B)	1R1G1B	1R1G1B
Module Pixel	64 x 128	64*128
Module Resolution	8,192	8,192
Module size	320mm x 160mm	320*160mm
Viewing Distance	≥ 3 M	≥ 3 M
brightness	≥ 1,000 cd/m <sup>2</sup>	≥ 1,000 cd/m <sup>2</sup>
Ratio	8192:1/16384:1	8192:1/16384:1
Viewing Angle	120° (H)/120°(V)	120° (H)/120°(V)
Weight	39kg	39kg
display Size	1920mm(H)X640mm(W)X45mm(T)	1920mm(H)X640mm(W)X45mm(T)
Case Material	Aluminum	Aluminum
Grayscale	16 bits RGB	16 bits RGB
Video frame rate	60 Hz	60 Hz
Refresh rate	> 1,200 Hz	> 1,200 Hz
Drive mode	1/16 scan	1/16 scan
Input voltage	AC90-240V	AC90-240V
Maximum Power Consumption	600W	600W

Average Power Consumption	280W	280W
Life Span	≥ 100,000 Hours	≥ 100,000 Hours
MTBF	≥ 10,000 Hours	≥ 10,000 Hours
Application	Indoor/ Semi-Outdoor	Indoor/ Semi-Outdoor
Control method:	Asynchronous(WIFI/USB/LAN)	Asynchronous(WIFI/USB/LAN/HDMI)
Temperature Operating (°C)	-.40° +75°	-.40° +75°
Working Humidity	10%–95%RH	10%–95%RH
Power Protection	Over-current/Over-voltage protection	Over-current/Over-voltage protection
Compliance	CE/ETL/ UL	CE/ETL/ UL
Joint screen qty(PCS)	1	2 to 10

**Applications:**

Shop poster  
Stage  
Restaurant  
Hotel

**Services Before-sale:**

Set a special telephone line to resolve the confusion from clients and supply free technology services by telephone.

Consider the demands of clients carefully , study the situation of the installation condition , Team up the related staff and workers promptly , give clients design program details to help them choose the products which they wanted as soon as possible

**Service In - sales :**

Try the best to meet the reasonable demands by clients Provisional changed .  
Keep close touch with the clients during the period if installation .  
Cooperate friendly with the clients, satisfy the clients with the best quality of led display .

**Service After-sale:**

Normal products have one year guarantee, and whole life maintenance, free charges . we just charge materials cost only if products out off guarantee.  
You can down load and upgrade the related operating software of Led display freely from our company website , so as to resolve the problems when you use our led display .

Check the quality of appliance , do maintenance job and ask good suggestions form clients on a regular time schedule .



**Shenzhen Weigu Electronic Technology Co., Ltd.**



86-15118043086



Linda@vegooled.com



hdled-display.com

806 Building 1 Geya Technology Building, Clock Base, Ma Tou community, Ma Tian Street, Guangming District ,  
Shenzhen, China