

P2 P2.5 P3 P4 Indoor Full Color LED Display Screen Video Wall High Refresh Rate

Our Product Introduction

for more products please visit us on hdled-display.com

Basic Information

- Place of Origin: China
- Brand Name: Vegoo
- Certification: CE
- Model Number: p3-dh
- Minimum Order Quantity: Negotiable
- Price: Negotiable
- Packaging Details: Plywood case / Flight case / Carton box
- Delivery Time: 10-20 days
- Payment Terms: T/T
- Supply Ability: 8000 sqm per month

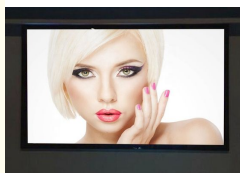


Product Specification

- Pixel Pitch: 2mm
- Density: 250,000 Pixel/m2
- Moduel Size(L×W)mm: 128mm×128mm
- Cabinet Resolution: 256×256
- Highlight: indoor full color led display screen,
indoor advertising led display



More Images



Product Description

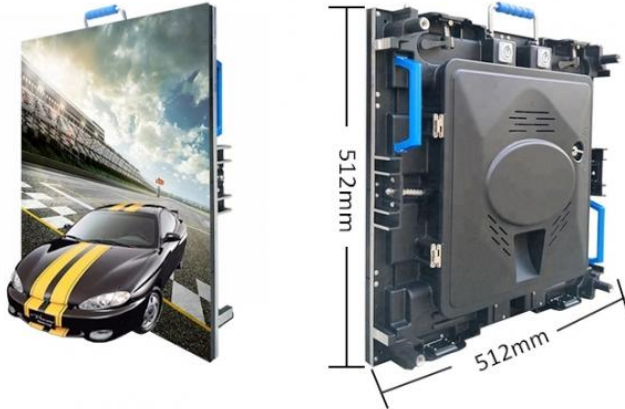
P2.0 Indoor Full color LED Display Specification

N O:	Product Name	Specification
1	Pixel Pitch	2.0mm
2	Pixel Configuration	1R1G1B/SMD1515 Black lamp

Our Product

3	Density	250,000 pixel/m2
4	Module Size(L×W)mm	128mm×128mm
5	Cabinet Size(L×W×H)mm	512mm×512mm×90mm
6	Module Resolution	64×64
7	Cabinet Resolution	256×256
8	Driving Method	1/32 Scan
9	Driving IC	MBI5153/ICN2153/FM6353
10	Brightness	600CD/
11	Contrast	6000 :1
12	Brightness Adjustment	Auto and Manual
13	Power Consumption	Max Power: 915W
14		Average power: 275W
15	Cabinet Weight	7.5kg
16	Color Temperature	6000K—9000K
17	Horizontal Viewing Angle	120°
18	Vertical Viewing Angle	120°
19	Signal Processing	16bit
20	Grey Processing	1024×1024×1024 16834×16834×16834
21	Control Distance	cable100m,Multimode500m,Single mode 2km
22	Frame Frequency	65 Hz
23	Refresh Rate	>3840Hz
24	Control Mode	Synchronous/Asynchronous
25	The Opposite Calibration Curve	With Eight Optional Gamma Calibration Curve
26		Users can choose the recommended curve or adjust it based on actual situation
27	MTBF	>50000 hours
28	Life Span	100,000 Hours
29	Operating Temperature	Working : -20 - 65 °C
30		Storage : -40 - 85 °C
31	Environment Temperature	-30°C to 60°C; humidity Rh10% to 95%
32	Remote Control	Can realize remote control and send alarm signal to operators in case of logging failure (Be customized)
33	Self-checking Technique	Self-inspection, communication test, power test, temperature monitoring (Be customized)
34	Operating System Platform	WindowsNT,Windows2000,WindowsXP,Windows7
35	Power Supply	AC 110-220V/5V60Hz
36	Protection	IP 45

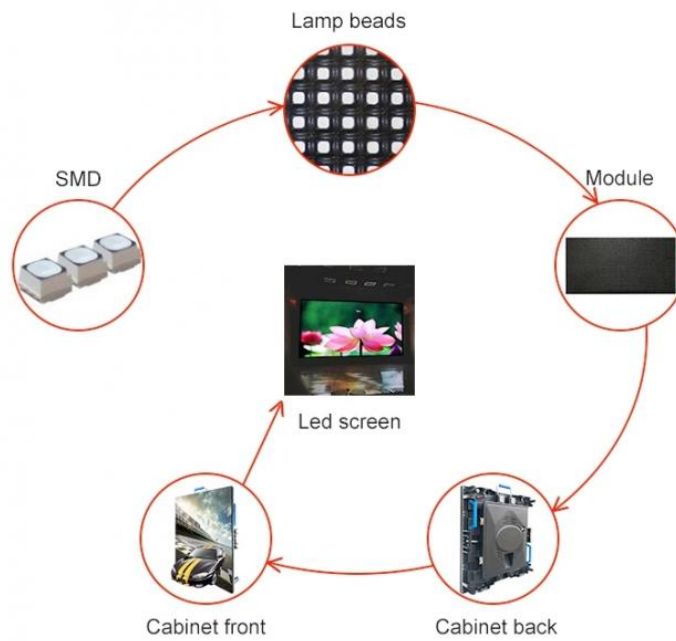
PHYSICAL DISPLAY



Application scenarios



COMBINATION



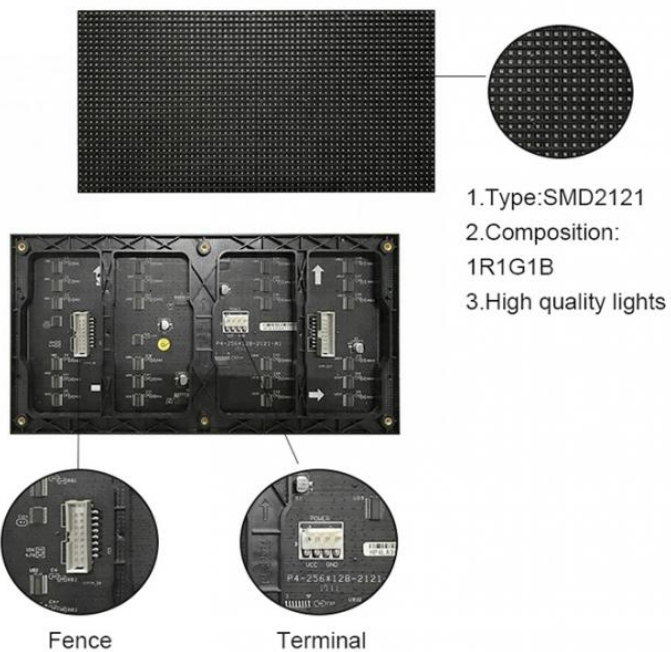
DETAILS SHOW



Die-casting aluminum cabinet

- 1.Light weight and Handling convenient
- 2.High definition,high refresh & high resolution
- 3.Easy installation and maintenance
- 4.Arbitrary size & arbitrary shape
- 5.Bright & fluent visusal effecta
- 6.Long service life

MODULE DETAILS



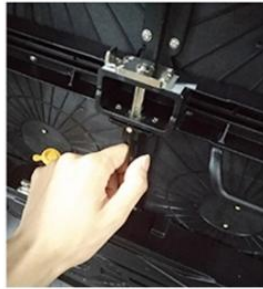
INSTALLATION METHOD



Seamless connection



No gaps of the connection



Step1: Hang the panel at the bottom of the top panel with the bracket lock.



Step2: Fixed with screws with directly in the bracket, and basically finish.



hanging installation



stacking installation

Advantage

ADVANTAGE

Our
high-definition
High brightness



Other
Low clear
Brightness dark



Application

APPLICATION

HD led display is widely used in meeting rooms, restaurants, Exhibition hall, background wall, shopping mall and other indoor places.





Packaging

PACKAGING



If you have any requirements for the packing boxes, you can customize them according to your requirements!

Certificate



CE-EMC



CE-LVD



3C

FAQ

What's the pixel pitch for Outdoor LED Display Screen?

Outdoor (P3mm/P3.91mm/P4mm/P4.81mm/P5mm/P6mm / P8mm/P10mm/P16mm)

What's the pixel pitch for Indoor LED Display Screen?

Indoor (P1.667mm/P1.923mm/P2mm/P2.5mm/P3mm/P3.91mm/P4mm/P4.81mm/P5mm/P6mm / P8mm/P10mm)

What's Packing List for my Order?

LED Module: Come With Flat Cable, Power cable, (Outdoor Rubber Ring)

LED Screen: Come With cabinet, power supply, led Receive Card, Power Cord, Signal Cable between Cabinet.

Sending card or LED Video Processor(as Customer choose, Linsn, Novastar, Colorlight or Huidu)

Why Shipping Cost is so expensive?

Usually shipping by Express is expensive, buyer can contact seller to check on-time shipping cost for Express, Air, Sea cost.

What's Delivery Time?

Usually Common Product have Stock, shipping out within 7 days after deposit.

Customized product need 10~20 days after getting deposit according to the project size.

How about your service?

Lifetime free maintenance and upgrade in Our Factory.

Complaint respond period not exceed 24 hours; maintenance guidance and problem solution supplied in 48 hours.

Free technician training and Support.

Full set of documents free of charge, which including installation guidance, software operation manual, easy maintenance manual and control system software CD and so on.

Special service for big project, such as stadium, exhibitions, squares and so on.

How can you ensure the led display product quality?

A: Our led display screen quality is our core competenc, We will have 3 times Quality test before shipment, If any quality failures within warranty time, we will refund you on alibaba or send new parts to you.

How to choose a proper led screen for you?

A: You just need to think of 3 simple questions in your head before you buy a led screen.

1 Will you use it indoor or outdoor?

2 Is it for rental use(need to be moved from one place to another place very often) or for fixed installation (to be installed in one place for ever).

3 What is the approximate size of the led screen you needed? what is the height and length?

How to install it after we receive it?

A: We will offer instructions to guide you on installation, and also software setting up photos or steel construction drawings.



Shenzhen Weigu Electronic Technology Co., Ltd.



86-15118043086



Linda@vegooled.com



hdled-display.com

806 Building 1 Geya Technology Building, Clock Base, Ma Tou community, Ma Tian Street, Guangming District ,
Shenzhen, China