



Outdoor Full Color LED Screens P6 P8 P10 Waterproof LED Video Wall Screen Display LED Advertising Billboard

Our Product Introduction

for more products please visit us on hdled-display.com

Basic Information

- Place of Origin: China
- Brand Name: Vegoo
- Certification: CE
- Model Number: VG-P6-DH
- Minimum Order Quantity: 1sqm
- Price: \$380
- Packaging Details: Plywood case / Flight case / Carton box
- Delivery Time: 10-20 days
- Payment Terms: T/T
- Supply Ability: 5000sqm/month

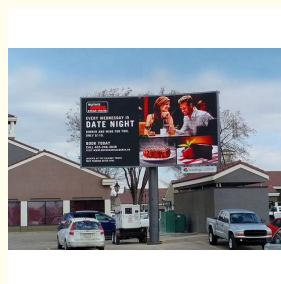
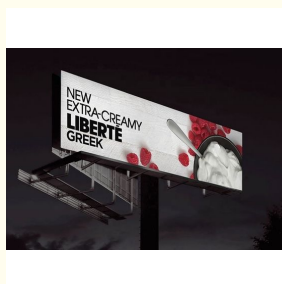
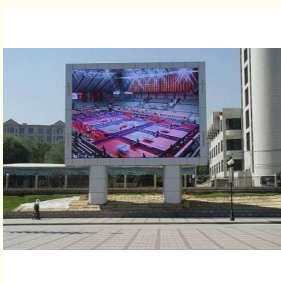


Product Specification

- Pixel Pitch: 8mm
- Warranty: 2 Years
- Life Span: 100000hours
- LED Encapsulation: SMD 3535



More Images



Product Description

P4,P5/P6/P8/P10 outdoor LED screen adopts physical and virtual pixel technology which makes the picture more clear and vivid, no flicker and blind dots. The screen is manufactured in a waterproof and dustproof design so it can work very well in rain and sunshine. It can be assembled and disassembled very easy, and it is an ideal product for any kind advertisements.

It is widely used in advertising, sports, industrial enterprise, transportation, stations, terminals, airports, construction, education system and other public places.

Main advantages:

1. New mask design makes LED light almost zero reflection, which ensures the screen displaying effect;
2. The cabinet of unit modules adopts to high-temperature spraying technology, the antirust function is greatly improved;
3. Module surface flatness $\pm 0.2\text{mm}$, the entire screen has good flatness;
4. High uniformity display color;
5. For improving the service life, PCB is made by wave soldering process with the green oxygen isolation layer, which prevents the line of moisture and oxidation.
6. Service efficiency of the screen switch power supply is increased substantially, which reduces power failure rate;
7. Using fishbone bus line greatly reduces the contact problem;
8. IP65 grade for high performance waterproof and dustproof capability;
9. $-25^{\circ}\text{C} - 65^{\circ}\text{C}$ working environment for outdoor display, adapted to the harsh environment.

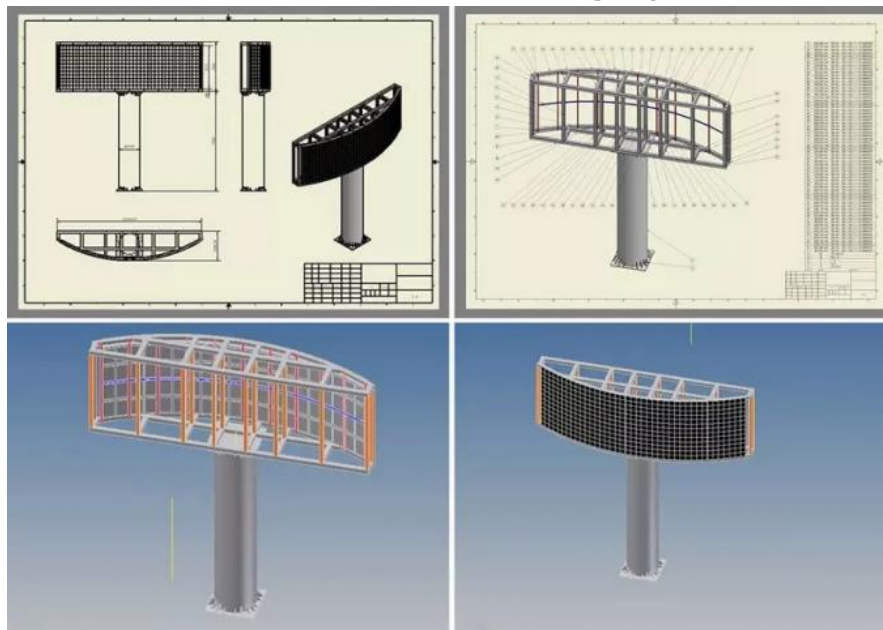
P8 Outdoor Full color LED Display Specification		
NO	Product Name	Specification
1	Pixel Pitch	8mm
2	Pixel Configuration	1R1G1B/SMD3535
3	Density	15,625 pixel/m ²
4	Module Size(L×W)mm	256mm×128mm
5	Cabinet Size(L×W×H)mm	768mm×768mm×130mm
6	Module Resolution	32×16
7	Cabinet Resolution	96×96
8	Driving Method	1/ 4 Scan
9	Driving IC	FM6124
10	Brightness	5500cd/
11	Contrast	6000 :1
12	Brightness Adjustment	Auto and Manual
13	Power Consumption	Max Power: 800W
14		Average power: 350W
15	Cabinet Weight	18kg
16	Color Temperature	2000K—9500K
17	Horizontal Viewing Angle	140°
18	Vertical Viewing Angle	140°
19	Signal Processing	16bit
20	Grey Processing	1024×1024×1024 16834×16834×16834
21	Control Distance	cable100m,Multimode500m,Single mode 2km
22	Frame Frequency	65 Hz
23	Refresh Rate	>1920Hz
24	Control Mode	Synchronous/Asynchronous
25	The Opposite Calibration Curve	With Eight Optional Gamma Calibration Curve
26		Users can choose the recommended curve or adjust it based on actual situation
27	MTBF	>50000 hours
28	Life Span	100,000 Hours
29	Operating Temperature	Working : -20 - 65 °C
30		Storage : -40 - 85 °C
31	Environment Temperature	-30°C to 60°C; humidity Rh10% to 95%

32	Remote Control	Can realize remote control and send alarm signal to operators in case of logging failure (Be customized)
33	Self-checking Technique	Self-inspection, communication test, power test, temperature monitoring (Be customized)
34	Operating System Platform	WindowsNT,Windows2000,WindowsXP,Windows7
35	Power Supply	AC 110-220V/5V60Hz
36	Protection	waterproof, dustproof, high temperature pervention, anticorrosion, smoulderproof, anti-static, shockproof, lightningproof, smoke alarm and temperature alarm. (Be customized)

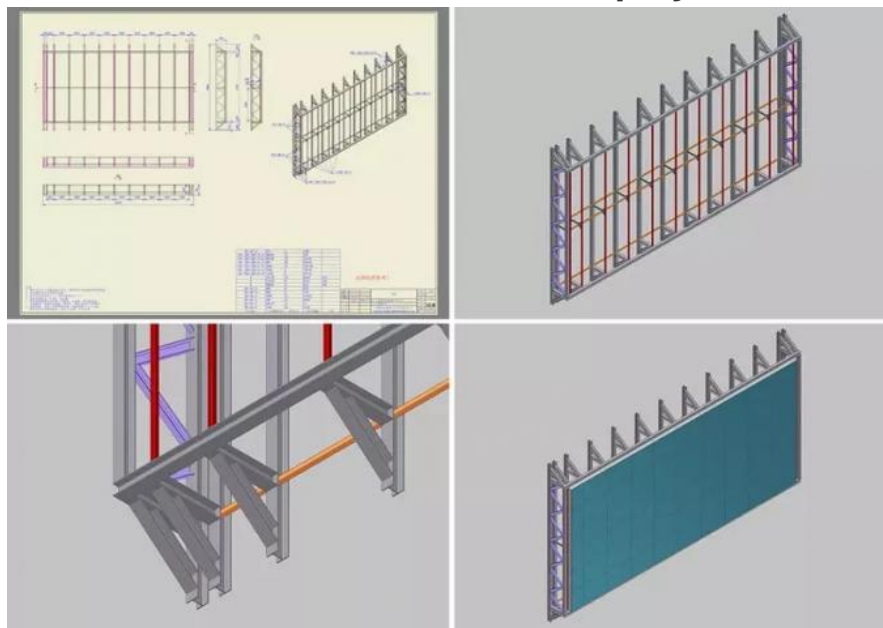
Where is LED display installed?

Vegoo provide structure frame design drawing and installation suggestions.

Pillar / Pole LED display



Wall mounted LED display





FAQ

1. Can we make any size of led display?

YES, but we suggest you take large size because it is better for outdoor advertising

2, How to install led display?

We will provide detailed drawing of steel structure or Teamviewer to help you install.

3 ,How to ship?

Normally, the display will be shipped by sea because it is much cheaper than by air.

4, Can I play different content on three sided display.

Yes, we will prepare you NOVA software by which you can set up three display windows and then upload different videos on them.

5, why do I need a video processor?

A video processor is a special component that scales and formats the video signal

from a media player, satellite receiver, DVD player, computer, or video game console and converts it into a format that can be displayed on an LED screen.

Better quality video processors include hardware and software that enhances image quality and also include multiple inputs so you can switch between several different video sources.

6, Can I do live-streaming ?

Yes , we will prepare a video processor that can realize your thoughts

7, What does "6mm or 4.8mm LED" mean?

The smaller number the higher definition. P4.8 is clearer than P6 because its higher resolution.

8, May I also know your company name and where you come from?

Sure, We would be very glad to provide you the most professional solution with good price upon receipt of your confirmation .



Shenzhen Weigu Electronic Technology Co., Ltd.



86-15118043086



Linda@vegooled.com



hdled-display.com

806 Building 1 Geya Technology Building, Clock Base, Ma Tou community, Ma Tian Street, Guangming District ,
Shenzhen, China