

P3.91 Outdoor LED Display 1000X1000mm Aluminum Cabinet SMD1921 Brightness 10000CD/m2 Nova System

Our Product Introduction

for more products please visit us on hdled-display.com

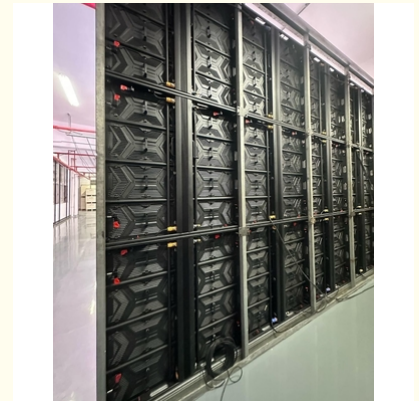
Basic Information

- Place of Origin: China
- Brand Name: Vegoo
- Certification: CE,FCC,RoHS
- Model Number: VG-P3.9
- Minimum Order Quantity: 1sqm
- Price: 573-885USD/Sqm
- Packaging Details: Plywood case
- Delivery Time: 7-25 days
- Payment Terms: T/T
- Supply Ability: 8000 Sqm/month



Product Specification

- Cabinet: 1000x1000mm
- Module: 500x250mm
- Pixel Pitch: 3.9mm,4.8mm,6.2mm,7.8mm,10.4mm
- LED Type: SMD1921/SMD2727
- Waterproof: IP65
- Cabinet Material: Aluminum
- Control System: Nova
- Driving IC: ICN2037/ICN2038
- Weight: 23KG/
- Highlight: 1000X1000mm Outdoor LED Display,
P3.91 Outdoor LED Display,
Aluminum Cabinet Outdoor LED Display



More Images



Product Description

P3.91 Outdoor LED Display 1000X1000mm Aluminum Cabinet SMD1921 Brightness 10000CD/m2 Nova System

3.9mm,4.8mm,6.2mm,7.8mm,10.4mm Outdoor led billboard display Features:

The P3.9 outdoor thin LED display offers several advantages that make it suitable for various applications, Available for stadium perimeter system L-type for better immersive watching experiences Be the best moment for naked-eye 3D image enhancement

Here are the key benefits:

1. High Brightness

Visibility in Daylight: With brightness levels often exceeding 5,000 nits, these displays ensure clear visibility even in direct sunlight.

2. Energy Efficiency

Common Cathode Design: The common cathode configuration reduces power consumption compared to traditional designs, leading to lower operating costs.

3. Improved Heat Dissipation

Thermal Management: Better heat management reduces the risk of overheating, thereby enhancing the lifespan of the display.

4. Good Resolution

Pixel Pitch: The 3.9mm pixel pitch strikes a balance between resolution and viewing distance, making it suitable for various outdoor environments.

5. Durable Construction

Weather Resistance: Typically rated IP65 or higher, these displays are designed to withstand harsh weather conditions, including rain, wind, and UV exposure.

6. Wide Viewing Angle

Audience Engagement: Offers a broad horizontal and vertical viewing angle, ensuring visibility from multiple positions, which is crucial for large crowds.

Detailed Images

Pixel pitch	P3.9mm	P4.8mm	P6.2mm	P7.8mm
Pixel density(dots/m²)	65410	43222	25600	16394
Module size(mm)	500*250mm	500*250mm	500*250mm	500*250mm
Brightness	>6500 CD/m2	>6500 CD/m2	>6500 CD/m2	>6500 CD/m2
Grey scale	14~16 bit	14~16 bit	14~16 bit	14~16 bit
LED lamp	SMD1921	SMD2727	SMD2727	SMD2727
Cabinet size(mm)	1000*1000mm	1000*1000mm	1000*1000mm	





Q1:How to choose a led display?

A: You should consider 3 simple questions when you choose a led screen by yourself.

1. What's the environment- indoor or outdoor ?
2. Is it for rental use (need to be moved from one place to another place frequently) or for fixed installation (to be installed in a place permanently)?
3. what is the approximate size of the led screen you would like to purchase?

Q2:Which pixel pitch should i choose?

A: There's a range of pixel pitch from 0.83--30mm, there is a roughly boundary---usually small pixel(0.83mm-2mm) used for indoor led screens, bigger pixel (2mm-30mm) used for outdoor led screen(for example huge advertisement billboard on a big building).

Q3:Which control system should i choose?

A:There are two kind of control systems on the market-synchronous and asynchronous control system, And for big size led screen(usually more than 20sqm) need to use synchronous control system, below 20sqm it's up to you to use syn or asyn. But asyn control system's refresh rate is much lower than sync control system and which you can use wifi, 3G, 4G etc wireless to control.

Q4:How to order from us?

A: Payment are made offline through T/T as deposit once order placed. All process are based on mutal cooperation.

Q5:How to pay?

A: T/T for order in large amount; and Paypal for samples for testing and trial orders.

Q6:How to ship?

A: Flexible shipping methods of the goods that are ordered and packaged according to customer's demand and requirements.

Q7:How to install it after customers have theirs goods in the site?

A: Engineering drawings and online instructions will be offered if customers have no available professional engineers in local places. We can also send our engineers to the site if on-site assistance is required.

Vegoo 威固电子 **Shenzhen Weigu Electronic Technology Co., Ltd.**

☎ 86-15118043086

✉ Linda@vegooled.com

🌐 hdled-display.com

806 Building 1 Geya Technology Building, Clock Base, Ma Tou community, Ma Tian Street, Guangming District, Shenzhen, China