

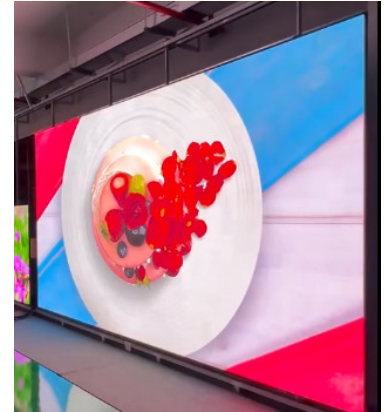
## COB Indoor LED Display Full Color P2.5 Airport Station Transportation Center

Our Product Introduction

for more products please visit us on [hdled-display.com](http://hdled-display.com)

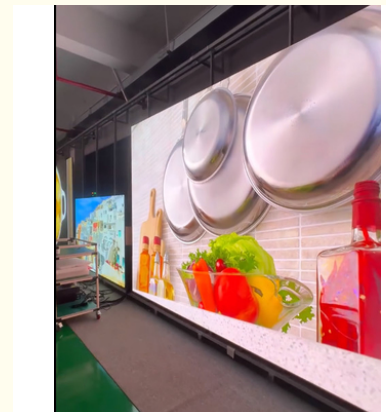
### Basic Information

- Place of Origin: China
- Brand Name: Vegoo
- Certification: CE/ROHS/FCC/CCC
- Model Number: VG-COB-P2.5
- Minimum Order Quantity: 0.6
- Price: \$1404/ (can negotiation)
- Packaging Details: Flight case(If purchase the 10 , can be free)/Wooden case(Free)
- Delivery Time: 7-15 days
- Payment Terms: T/T in advance(30% deposit, negotiation)
- Supply Ability: ≥100 in stock



### Product Specification

- MOQ: 0.6
- Weight: 320g
- Scan: 1/45scan
- Warrenty: 2 Years(if You Have Higher Requirement About This, We Can Ensure It To 3/4/5/6 Years)
- Highlight: **Airport Station Indoor LED Display , Full Color Indoor LED Display , P2.5 Indoor LED Display**



### More Images

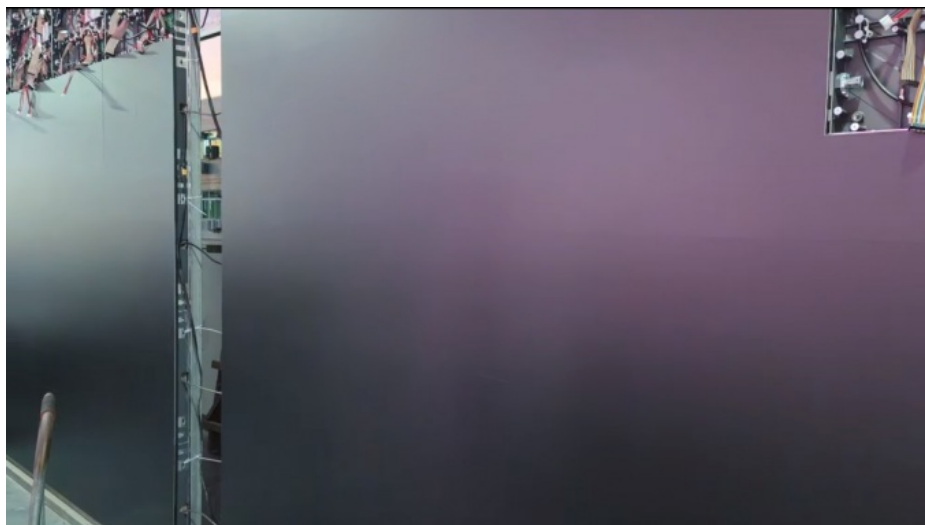


## Product Description

### Advantages

1. Good heat dissipation performance
2. Small size and light weight

### Image details



### Parameters

UNIT MODULE PARAMETERS	
(Parameter )	(Value)
(Pixel Pitch)	2.5mm
(Pixel configuration)	1R1G1B
(LED type)	2020 SMD 3-in-1
(Brightness )	500-600 nits(adjustable)
(Color temperature)	7500K~10000K±500K
(Viewing angle)	H:110°;V:110°
(Unit module size)	300*337.5mm
(Unit module resolution)	120*135 Dots
(Unit module pixel density)	16200pixels
(Driving Method)	Constant current, 1/45s
(Processing depth)	14 bits
(Gray scale)	16384 levels per color
(Color )	281.4 trillion
(Brightness control)	(Manual/Automatic)
(Maximum contrast)	3000:1
(Video frame rate)	50/60 Hz
(Rate refresh)	2800~3840 Hz
(Input voltage)	220VAC(can be 110VAC input)
(Input power frequency)	50Hz
(Input power <max>)	≤590W/m <sup>2</sup> (30W/module)
(Input power <typical>)	≤177W/m <sup>2</sup> (9W/module)
(Life Time)	≥100,000 Hours
(Maintenance mode)	Front maintenance
(Recommended viewing distance)	2M-15M
(Weight)	320g

(Diagonal)	13.5"
(Aspect ratio)	16:9
(Material)	PCB material: fiberglass board LED lamp material: epoxy resin
(Rigging form)	Default back frame installation (other installation methods are also possible)
(Input signal)	SDI,RF,S-VIDEO,RGBHV,YUV,YC & COMPOSITION,etc
(Data interconnection)	(L≤100m);(single mode fiber )(L≤20km)
(Product certification)	CCC
(Brightness)	500-600 nits(adjustable)
(Color temperature)	7500K~10000K±500K
(Viewing angle)	H:110°;V:110°
(Unit cabinet size)	600*337.5*33mm/300*337.5*33mm
(Unit cabinet resolution)	240*135 Dots/160*180 Dots
(Unit cabinet pixel density)	32400pixels/16200pixels
(Gray scale)	16384 levels per color
(Color)	281.4 trillion
(Brightness control)	(Manual/Automatic)
(Maximum contrast )	3000:1
(Video frame rate)	50/60 Hz
(Rate refresh)	2800~3840 Hz
(Input power frequency)	50Hz
(Input power <max>)	≤450W/m2(90W/cabinet)
(Input power <typical>)	≤135W/m2(27W/cabinet)
(Life Time)	≥100,000 Hours
(Maintenance mode)	Front maintenance
(Recommended viewing distance)	2M-15M
(Weight)	4.5 kg/panel
(Diagonal)	27"
(Aspect ratio)	16:9
(Material)	(Die-casting Aluminum)
(Ingress protection)	IP30
(Operating Temperature/Humidity)	-10°C~+45°C/≤55%RH
(Storage Temperature/Humidity)	-10°C~+55°C/≤55%RH
Note:The power is reference,specification subjected to change without prior notice.	



Shenzhen Weigu Electronic Technology Co., Ltd.



86-15118043086



Linda@vegooled.com



hdled-display.com

806 Building 1 Geya Technology Building, Clock Base, Ma Tou community, Ma Tian Street, Guangming District, Shenzhen, China